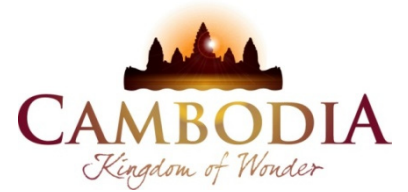




KINGDOM OF CAMBODIA
NATION RELIGION KING



TOURISM STATISTICS REPORT

February 2019

MINISTRY OF TOURISM

Statistics and Tourism Information Department

No. A3, Street 169, Sangkat Veal Vong, Khan 7 Makara, Phnom Penh, Cambodia.

Fax: +855 23 885003

E-mail: kong@tourism.gov.kh

Web site: www.tourism.gov.kh

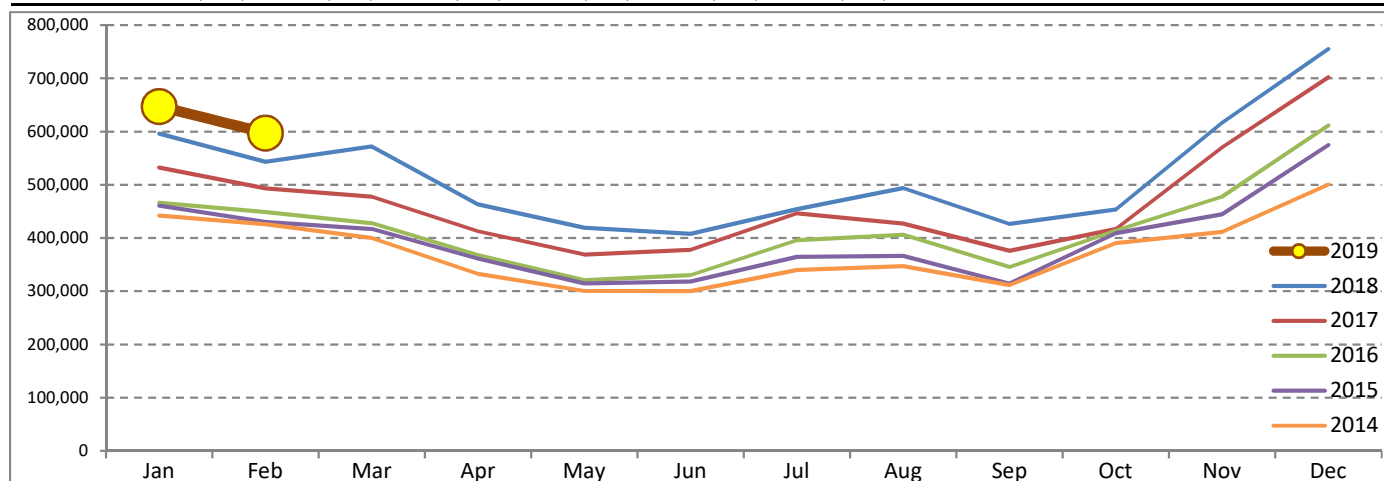
Tourism Highlights

Int'l Tourist Arrivals, Average Length of Stays, Hotel Occupancy & Int'l Tourism Receipts 1993 - 2018

Years	Int'l Tourist Arrivals		Average Length	Hotel Occupancy	Int'l Tourism Receipts
	Number	Change (%)	of Stays (Days)	(%)	(Million US\$)
1993	118,183	-	N/A	N/A	N/A
1994	176,617	49.4	N/A	N/A	N/A
1995	219,680	24.4	8.00	37.0	100
1996	260,489	18.6	7.50	40.0	118
1997	218,843	-16.0	6.40	30.0	103
1998	286,524	30.9	5.20	40.0	166
1999	367,743	28.3	5.50	44.0	190
2000	466,365	26.8	5.50	45.0	228
2001	604,919	29.7	5.50	48.0	304
2002	786,524	30.0	5.80	50.0	379
2003	701,014	-10.9	5.50	50.0	347
2004	1,055,202	50.5	6.30	52.0	578
2005	1,421,615	34.7	6.30	52.0	832
2006	1,700,041	19.6	6.50	54.8	1,049
2007	2,015,128	18.5	6.50	54.8	1,400
2008	2,125,465	5.5	6.65	62.7	1,595
2009	2,161,577	1.7	6.45	63.6	1,561
2010	2,508,289	16.0	6.45	65.7	1,786
2011	2,881,862	14.9	6.50	66.2	1,912
2012	3,584,307	24.4	6.30	68.5	2,210
2013	4,210,165	17.5	6.75	69.5	2,547
2014	4,502,775	7.0	6.50	67.6	2,736
2015	4,775,231	6.1	6.80	70.2	3,012
2016	5,011,712	5.0	6.30	68.9	3,212
2017	5,602,157	11.8	6.60	71.3	3,638
2018	6,201,077	10.7	7.00	72.2	4,375

International Tourist Arrivals to Cambodia

Months	2014	2015	2016	2017	2018	2019	Change (%)				
							15/14	16/15	17/16	18/17	19*/18
Q1	1,267,922	1,307,836	1,342,477	1,502,896	1,711,253	1,244,689	3.1	2.6	11.9	13.9	
Jan	442,045	460,577	466,086	532,206	596,241	647,206	4.2	1.2	14.2	12.0	8.5
Feb	425,801	430,207	448,468	493,316	542,937	597,483	1.0	4.2	10.0	10.1	10.0
Mar	400,076	417,052	427,923	477,374	572,075		4.2	2.6	11.6	19.8	
Q2	933,446	994,154	1,018,455	1,159,783	1,290,407	0	6.5	2.4	13.9	11.3	
Apr	332,690	361,139	367,684	412,925	463,423		8.6	1.8	12.3	12.2	
May	300,302	314,748	320,601	368,809	419,171		4.8	1.9	15.0	13.7	
Jun	300,454	318,267	330,170	378,049	407,813		5.9	3.7	14.5	7.9	
Q3	998,690	1,044,880	1,147,483	1,250,082	1,374,373	0	4.6	9.8	8.9	9.9	
Jul	340,091	364,325	395,761	446,627	454,056		7.1	8.6	12.9	1.7	
Aug	347,211	366,096	406,214	427,224	494,043		5.4	11.0	5.2	15.6	
Sep	311,388	314,459	345,508	376,231	426,274		1.0	9.9	8.9	13.3	
Q4	1,302,717	1,428,361	1,503,297	1,689,396	1,825,044	0	9.6	5.2	12.4	8.0	
Oct	390,637	408,922	414,077	417,039	453,370		4.7	1.3	0.7	8.7	
Nov	411,501	444,640	477,686	570,471	616,549		8.1	7.4	19.4	8.1	
Dec	500,579	574,799	611,534	701,886	755,125		14.8	6.4	14.8	7.6	
Total	4,502,775	4,775,231	5,011,712	5,602,157	6,201,077	1,244,689	6.1	5.0	11.8	10.7	9.3



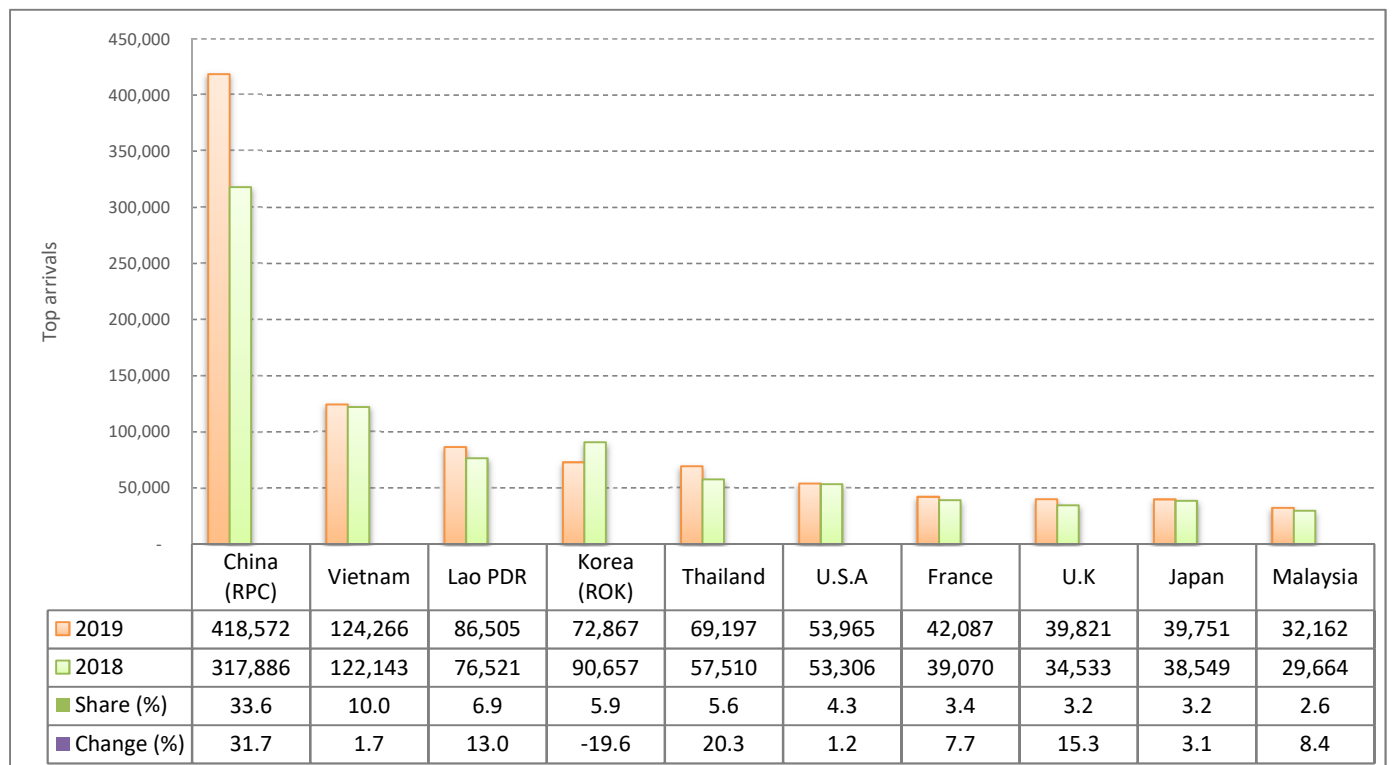
Source: Tourism Statistics Department, MOT

I. INBOUND TOURISM

1. International tourist arrivals in January - February 2019

	Inbound tourism			Share (%) 2019*	Change (%)	
	2017	2018	2019		18/17	2019*/18
Air	629,927	762,518	842,679	67.7	21.0	10.5
Phnom Penh Int'l Airport (PNH)	229,185	311,112	367,134	29.5	35.7	18.0
Siem Reap Int'l Airport (REP)	385,459	431,788	400,442	32.2	12.0	-7.3
Kong Keng (KOS)	15,283	19,618	75,103	6.0	28.4	282.8
Land and Waterways	395,595	376,660	402,010	32.3	-4.8	6.7
Land	343,195	337,682	355,990	28.6	-1.6	5.4
Waterways	52,400	38,978	46,020	3.7	-25.6	18.1
Total	1,025,522	1,139,178	1,244,689	100.0	11.1	9.3

2. Top ten markets arrivals in January - February 2019



II. OUTBOUND TOURISM

Outbound tourism in January - February 2019

	Outbound tourism			Change (%)	
	2017	2018	2019	18/17	2019*/18
Cambodian Outbound Tourists	245,016	289,279	300,749	18.1	4.0
International Tourists Departure	898,591	1,103,939	1,137,882	22.9	3.1

III. INTERNAL TOURISM

Foreign visitor arrivals to the regions in January - February 2019

	Arrivals			Share (%) 2019*	Change (%)	
	2017	2018	2019		18/17	2019*/18
Phnom Penh & Surrounding	486,468	548,976	700,380	47.7	12.8	27.6
Siem Reap Angkor	539,054	590,202	544,309	37.1	9.5	-7.8
Coastal Areas	147,991	169,361	204,434	13.9	14.4	20.7
Eco-tourism Areas	14,763	15,383	17,819	1.2	4.2	15.8
Total	1,188,276	1,323,922	1,466,942	100.0	11.4	10.8

International Tourist Arrivals to Cambodia by Country of Residence in January - February 2019

(by all means of transportation)

Regions Country of Residence	2018		2019			Share		Change
		Purposes of Visit			Total	Female	2019*	2019*/18
		Holiday	Business	Others				
Grand Total	1,139,178	1,038,679	171,117	34,893	1,244,689	506,742	100.0	9.3
Asia and the Pacific	848,333	773,766	162,504	18,856	955,126	373,861	76.7	12.6
ASEAN (Southeast Asia)	327,149	317,402	26,888	9,126	353,416	113,702	28.4	8.0
Brunei Darussalam	128	300	5	6	311	171	0.0	143.0
Indonesia	9,307	6,061	3,814	548	10,423	2,708	0.8	12.0
Lao PDR	76,521	84,505	211	1,789	86,505	15,896	6.9	13.0
Malaysia	29,664	28,248	3,411	503	32,162	8,645	2.6	8.4
Myanmar	3,952	3,075	727	165	3,967	1,326	0.3	0.4
Philippines	14,877	11,670	2,278	221	14,169	8,145	1.1	-4.8
Singapore	13,047	11,215	872	329	12,416	3,359	1.0	-4.8
Thailand	57,510	61,872	4,514	2,811	69,197	20,303	5.6	20.3
Vietnam	122,143	110,456	11,056	2,754	124,266	53,149	10.0	1.7
Northeast Asia	472,761	420,035	132,864	5,000	557,899	243,695	44.8	18.0
China	317,886	296,124	120,824	1,624	418,572	184,352	33.6	31.7
Hong Kong (China)	2,016	709	29	34	772	96	0.1	-61.7
Japan	38,549	34,279	4,420	1,052	39,751	15,860	3.2	3.1
Korea (ROK)	90,657	68,492	2,978	1,397	72,867	32,516	5.9	-19.6
Macau (China)	81	38	5	9	52	8	0.0	-35.8
Mongolia	241	333	14	22	369	172	0.0	53.1
Taiwan (China)	23,331	20,060	4,594	862	25,516	10,691	2.0	9.4
Southern Asia	12,770	12,408	1,489	205	14,102	3,845	1.1	10.4
Afghanistan	44	54	8	6	68	27	0.0	54.5
Bangladesh	388	675	130	19	824	89	0.1	112.4
Bhutan	38	69	3	4	76	30	0.0	100.0
India	10,750	9,880	1,009	74	10,963	3,271	0.9	2.0
Iran	214	171	7	7	185	46	0.0	-13.6
Nepal	455	474	71	44	589	190	0.0	29.5
Pakistan	440	656	103	25	784	99	0.1	78.2
Sri Lanka	441	429	158	26	613	93	0.0	39.0
Oceania	31,255	23,422	1,167	4,411	29,000	12,305	2.3	-7.2
Australia	26,368	20,368	1,001	3,413	24,782	10,520	2.0	-6.0
Fiji	37	53	10	19	82	23	0.0	121.6
New Zealand	4,850	3,001	156	979	4,136	1,762	0.3	-14.7
Other Asia & the Pacific	4,398	499	96	114	709	314	0.1	-83.9
Europe	204,320	192,464	5,637	6,580	204,681	91,770	16.4	0.2
Northern Europe	51,891	52,803	1,766	656	55,225	23,489	4.4	6.4
Denmark	3,764	3,728	77	25	3,830	1,779	0.3	1.8
Finland	2,132	1,885	57	35	1,977	888	0.2	-7.3
Iceland	314	264	8	15	287	137	0.0	-8.6
Ireland	2,316	2,103	91	37	2,231	930	0.2	-3.7
Norway	3,199	2,326	52	56	2,434	1,176	0.2	-23.9
Sweden	5,633	4,432	119	94	4,645	2,008	0.4	-17.5
United Kingdom	34,533	38,065	1,362	394	39,821	16,571	3.2	15.3
Western Europe	84,137	78,526	2,539	5,149	86,214	36,436	6.9	2.5
Austria	3,094	3,211	51	55	3,317	1,540	0.3	7.2
Belgium	4,118	4,177	150	124	4,451	2,140	0.4	8.1
France	39,070	36,488	1,493	4,106	42,087	17,540	3.4	7.7
Germany	25,694	23,783	463	328	24,574	10,073	2.0	-4.4
Luxembourg	160	135	13	14	162	54	0.0	1.3
Monaco	27	11	3	6	20	4	0.0	-25.9
Netherlands	6,337	5,950	230	203	6,383	2,806	0.5	0.7
Switzerland	5,637	4,771	136	313	5,220	2,279	0.4	-7.4
Central / Eastern Europe	40,475	35,436	693	440	36,569	19,119	2.9	-9.7
Bulgaria	727	714	25	28	767	412	0.1	5.5
Czech Republic	2,524	2,249	30	29	2,308	1,010	0.2	-8.6
Estonia	955	425	21	11	457	207	0.0	-52.1
Hungary	1,794	2,290	25	16	2,331	1,164	0.2	29.9
Kazakhstan	641	600	49	22	671	381	0.1	4.7
Kyrgyzstan	55	83	9	9	101	68	0.0	83.6
Latvia	384	231	11	7	249	124	0.0	-35.2
Lithuania	728	725	6	9	740	388	0.1	1.6
Poland	5,882	6,325	54	31	6,410	3,178	0.5	9.0
Romania	1,090	1,117	45	34	1,196	599	0.1	9.7
Russian Federation	22,342	17,126	253	160	17,539	9,552	1.4	-21.5
Slovakia	1,049	815	28	26	869	404	0.1	-17.2
Ukraine	2,118	2,595	109	28	2,732	1,556	0.2	29.0
Uzbekistan	186	141	28	30	199	76	0.0	7.0

International Tourist Arrivals to Cambodia by Country of Residence in January - February 2019

(by all means of transportation)

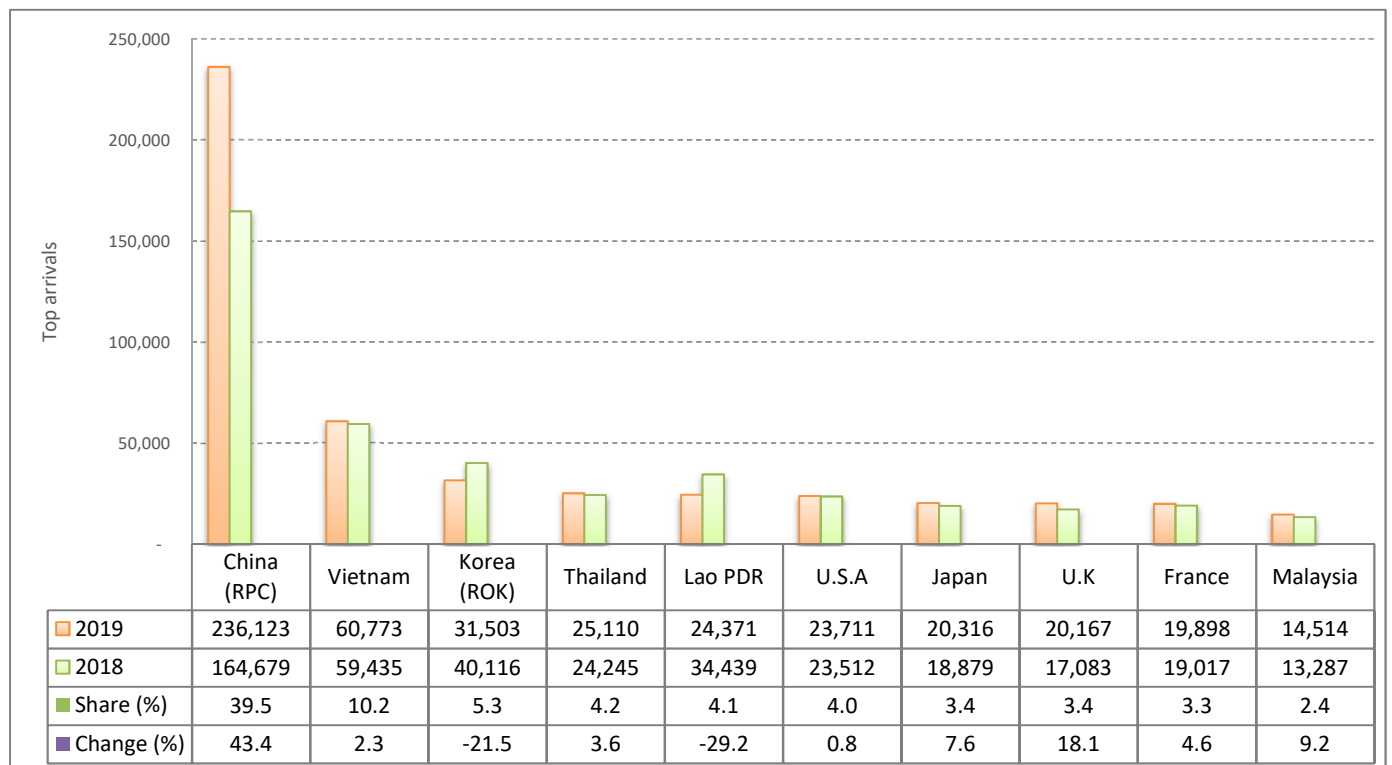
Regions Country of Residence	2018	2019			Total	Female	Share	Change
		Purposes of Visit					2019*	2019*/18
		Holiday	Business	Others			(%)	(%)
Grand Total	1,139,178	1,038,679	171,117	34,893	1,244,689	506,742	100.0	9.3
Southern Europe	18,886	19,351	503	237	20,091	9,662	1.6	6.4
Croatia	611	517	24	19	560	248	0.0	-8.3
Greece	510	410	23	24	457	186	0.0	-10.4
Italy	9,295	11,079	216	96	11,391	5,520	0.9	22.5
Malta	102	98	7	6	111	46	0.0	8.8
Portugal	1,495	1,579	30	24	1,633	855	0.1	9.2
Serbia	444	435	13	22	470	269	0.0	5.9
Slovenia	535	506	24	16	546	216	0.0	2.1
Spain	5,894	4,727	166	30	4,923	2,322	0.4	-16.5
East Mediterranean Europe	6,580	6,111	92	69	6,272	2,917	0.5	-4.7
Israel	4,137	4,631	32	20	4,683	2,180	0.4	13.2
Turkey	2,443	1,480	60	49	1,589	737	0.1	-35.0
Other Europe	2,351	237	44	29	310	147	0.0	-86.8
Americas	83,288	68,894	2,601	9,291	80,786	39,511	6.5	-3.0
North America	69,841	59,600	2,414	9,137	71,151	34,220	5.7	1.9
Canada	15,132	13,546	559	1,510	15,615	7,342	1.3	3.2
Mexico	1,403	1,489	41	41	1,571	707	0.1	12.0
United States of America	53,306	44,565	1,814	7,586	53,965	26,171	4.3	1.2
Central America	348	216	13	14	243	114	0.0	-30.2
Costa Rica	285	156	4	7	167	78	0.0	-41.4
Honduras	33	28	4	3	35	15	0.0	6.1
Jamaica	30	32	5	4	41	21	0.0	36.7
South America	11,849	8,944	143	120	9,207	5,092	0.7	-22.3
Argentina	4,393	2,253	16	20	2,289	1,235	0.2	-47.9
Brazil	3,789	3,080	43	18	3,141	1,744	0.3	-17.1
Chile	1,686	1,939	24	11	1,974	1,097	0.2	17.1
Colombia	985	824	23	18	865	454	0.1	-12.2
Ecuador	158	114	8	15	137	71	0.0	-13.3
Peru	422	306	10	14	330	221	0.0	-21.8
Uruguay	335	342	6	13	361	208	0.0	7.8
Venezuela	81	86	13	11	110	62	0.0	35.8
Other America	1,250	134	31	20	185	85	0.0	-85.2
Africa	2,313	2,441	292	80	2,813	1,303	0.2	21.6
North Africa	333	688	14	11	713	365	0.1	114.1
Morocco	233	174	7	4	185	72	0.0	-20.6
Sudan	37	35	3	4	42	16	0.0	13.5
Tunisia	63	479	4	3	486	277	0.0	671.4
Subsaharan Africa	1,742	1,689	267	58	2,014	907	0.2	15.6
Cameroon	39	40	5	9	54	12	0.0	38.5
Congo	15	44	4	4	52	14	0.0	246.7
Ghana	26	64	8	7	79	15	0.0	203.8
Kenya	75	56	6	4	66	42	0.0	-12.0
Liberia	9	68	3	3	74	10	0.0	722.2
Nigeria	112	31	79	14	124	13	0.0	10.7
South Africa	1,403	1,283	148	7	1,438	737	0.1	2.5
Tanzania	30	26	5	3	34	11	0.0	13.3
Uganda	14	50	6	5	61	28	0.0	335.7
Zimbabwe	19	27	3	2	32	25	0.0	68.4
Other Africa	238	64	11	11	86	31	0.0	-63.9
Middle East	924	1,114	83	86	1,283	297	0.1	38.9
Egypt	165	156	10	6	172	27	0.0	4.2
Iraq	60	41	7	29	77	9	0.0	28.3
Jordan	84	101	12	6	119	22	0.0	41.7
Kuwait	93	63	9	11	83	20	0.0	-10.8
Oman	36	58	3	3	64	13	0.0	77.8
Palestine	15	8	4	2	14	1	0.0	-6.7
Qatar	16	11	4	2	17	1	0.0	6.3
Saudi Arabia	48	74	5	5	84	18	0.0	75.0
Syria	71	78	4	5	87	9	0.0	22.5
United Arab Emirates	43	306	14	3	323	136	0.0	651.2
Yemen	82	172	5	7	184	18	0.0	124.4
Other Middle East	211	46	6	7	59	23	0.0	-72.0

I. INBOUND TOURISM

1. International tourist arrivals in February 2019

	Inbound tourism			Share (%) 2019*	Change (%)	
	2017	2018	2019		18/17	2019*/18
Air	301,324	373,963	439,273	73.5	24.1	17.5
Phnom Penh Int'l Airport (PNH)	110,503	152,132	194,439	32.5	37.7	27.8
Siem Reap Int'l Airport (REP)	184,112	211,920	197,172	33.0	15.1	-7.0
Kong Keng (KOS)	6,709	9,911	47,662	8.0	47.7	380.9
Land and Waterways	191,992	168,974	158,210	26.5	-12.0	-6.4
Land	164,767	149,717	136,654	22.9	-9.1	-8.7
Waterways	27,225	19,257	21,556	3.6	-29.3	11.9
Total	493,316	542,937	597,483	100.0	10.1	10.0

2. Top ten markets arrivals in February 2019



II. OUTBOUND TOURISM

Outbound tourism in February 2019

	Outbound tourism			Change (%)	
	2017	2018	2019	18/17	2019*/18
Cambodian Outbound Tourists	121,874	142,332	146,448	16.8	2.9
International Tourists Departure	441,289	551,588	527,257	25.0	-4.4

III. INTERNAL TOURISM

Foreign visitor arrivals to the regions in February 2019

	Arrivals			Share (%) 2019*	Change (%)	
	2017	2018	2019		18/17	2019*/18
Phnom Penh & Surrounding	241,416	247,548	324,224	45.0	2.5	31.0
Siem Reap Angkor	251,900	295,389	273,259	37.9	17.3	-7.5
Coastal Areas	79,130	93,142	113,246	15.7	17.7	21.6
Eco-tourism Areas	8,086	8,817	10,185	1.4	9.0	15.5
Total	580,532	644,896	720,914	100.0	11.1	11.8

International Tourist Arrivals to Cambodia by Country of Residence in February 2019

(by all means of transportation)

Regions Country of Residence	2018		2019			Share		Change
		Purposes of Visit			Total	Female	2019*	2019*/18
		Holiday	Business	Others				
Grand Total	542,937	474,273	111,584	11,626	597,483	261,692	100.0	10.0
Asia and the Pacific	404,288	349,663	107,766	4,610	462,039	196,367	77.3	14.3
ASEAN (Southeast Asia)	150,434	128,965	13,632	1,166	143,763	66,764	24.1	-4.4
Brunei Darussalam	53	63	3	3	69	31	0.0	30.2
Indonesia	4,403	3,084	2,156	55	5,295	1,336	0.9	20.3
Lao PDR	34,439	24,293	50	28	24,371	14,064	4.1	-29.2
Malaysia	13,287	12,283	2,088	143	14,514	4,571	2.4	9.2
Myanmar	1,874	1,438	379	41	1,858	673	0.3	-0.9
Philippines	7,379	5,931	765	49	6,745	3,848	1.1	-8.6
Singapore	5,319	4,481	477	70	5,028	1,648	0.8	-5.5
Thailand	24,245	22,754	1,977	379	25,110	9,649	4.2	3.6
Vietnam	59,435	54,638	5,737	398	60,773	30,944	10.2	2.3
Northeast Asia	236,211	206,097	92,928	1,982	301,007	123,753	50.4	27.4
China	164,679	148,318	86,820	985	236,123	95,463	39.5	43.4
Hong Kong (China)	1,088	221	17	10	248	56	0.0	-77.2
Japan	18,879	17,983	2,094	239	20,316	8,284	3.4	7.6
Korea (ROK)	40,116	29,669	1,393	441	31,503	14,252	5.3	-21.5
Macau (China)	50	17	3	2	22	8	0.0	-56.0
Mongolia	92	109	9	13	131	60	0.0	42.4
Taiwan (China)	11,307	9,780	2,592	292	12,664	5,630	2.1	12.0
Southern Asia	5,877	5,538	664	59	6,261	1,647	1.0	6.5
Afghanistan	26	12	6	3	21	2	0.0	-19.2
Bangladesh	190	337	71	10	418	47	0.1	120.0
Bhutan	18	13	2	2	17	5	0.0	-5.6
India	4,934	4,276	433	21	4,730	1,406	0.8	-4.1
Iran	121	86	3	4	93	30	0.0	-23.1
Nepal	188	266	33	5	304	73	0.1	61.7
Pakistan	213	325	45	5	375	41	0.1	76.1
Srilanka	187	223	71	9	303	43	0.1	62.0
Oceania	10,982	8,849	469	1,396	10,714	4,074	1.8	-2.4
Australia	9,205	7,543	403	1,096	9,042	3,500	1.5	-1.8
Fiji	14	15	5	7	27	6	0.0	92.9
New Zealand	1,763	1,291	61	293	1,645	568	0.3	-6.7
Other Asia & the Pacific	784	214	73	7	294	129	0.0	-62.5
Europe	100,328	92,658	2,520	3,261	98,439	47,376	16.5	-1.9
Northern Europe	26,288	26,755	731	351	27,837	12,905	4.7	5.9
Denmark	1,915	1,925	28	11	1,964	954	0.3	2.6
Finland	981	946	29	19	994	446	0.2	1.3
Iceland	227	121	5	10	136	64	0.0	-40.1
Ireland	1,246	1,039	35	26	1,100	466	0.2	-11.7
Norway	1,872	1,226	18	30	1,274	636	0.2	-31.9
Sweden	2,964	2,105	52	45	2,202	994	0.4	-25.7
United Kingdom	17,083	19,393	564	210	20,167	9,345	3.4	18.1
Western Europe	41,413	37,582	1,116	2,463	41,161	19,262	6.9	-0.6
Austria	1,621	1,709	23	19	1,751	836	0.3	8.0
Belgium	1,943	1,865	78	64	2,007	922	0.3	3.3
France	19,017	17,399	636	1,863	19,898	9,540	3.3	4.6
Germany	12,834	11,407	217	146	11,770	5,473	2.0	-8.3
Luxembourg	97	69	8	7	84	29	0.0	-13.4
Monaco	11	3	1	2	6	1	0.0	-45.5
Netherlands	3,072	2,897	102	161	3,160	1,401	0.5	2.9
Switzerland	2,818	2,233	51	201	2,485	1,060	0.4	-11.8
Central / Eastern Europe	19,672	16,183	347	294	16,824	9,105	2.8	-14.5
Bulgaria	315	426	22	21	469	254	0.1	48.9
Czech Republic	1,430	1,221	18	23	1,262	576	0.2	-11.7
Estonia	515	204	17	6	227	107	0.0	-55.9
Hungary	750	1,041	14	7	1,062	535	0.2	41.6
Kazakhstan	278	295	26	11	332	198	0.1	19.4
Kyrgyzstan	23	39	2	5	46	32	0.0	100.0
Latvia	117	106	4	2	112	54	0.0	-4.3
Lithuania	326	354	2	3	359	197	0.1	10.1
Poland	2,913	2,929	25	24	2,978	1,599	0.5	2.2
Romania	491	390	28	22	440	198	0.1	-10.4
Russian Federation	10,890	7,566	118	118	7,802	4,401	1.3	-28.4
Slovakia	544	385	19	21	425	203	0.1	-21.9
Ukraine	991	1,163	48	19	1,230	715	0.2	24.1
Uzbekistan	89	64	4	12	80	36	0.0	-10.1

International Tourist Arrivals to Cambodia by Country of Residence in February 2019

(by all means of transportation)

Regions Country of Residence	2018	2019			Total	Female	Share	Change
		Purposes of Visit					2019*	2019*/18
		Holiday	Business	Others			(%)	(%)
Grand Total	542,937	474,273	111,584	11,626	597,483	261,692	100.0	10.0
Southern Europe	9,162	9,190	253	126	9,569	4,663	1.6	4.4
Croatia	229	217	13	11	241	98	0.0	5.2
Greece	225	168	16	10	194	67	0.0	-13.8
Italy	4,363	5,224	83	58	5,365	2,629	0.9	23.0
Malta	48	50	6	3	59	28	0.0	22.9
Portugal	741	820	18	11	849	450	0.1	14.6
Serbia	316	183	11	10	204	119	0.0	-35.4
Slovenia	273	283	16	11	310	125	0.1	13.6
Spain	2,967	2,245	90	12	2,347	1,147	0.4	-20.9
East Mediterranean Europe	3,388	2,845	46	22	2,913	1,389	0.5	-14.0
Israel	2,118	2,194	18	5	2,217	1,052	0.4	4.7
Turkey	1,270	651	28	17	696	337	0.1	-45.2
Other Europe	405	103	27	5	135	52	0.0	-66.7
Americas	37,008	30,775	1,116	3,707	35,598	17,412	6.0	-3.8
North America	31,175	26,823	1,009	3,617	31,449	15,133	5.3	0.9
Canada	7,098	6,448	218	550	7,216	3,417	1.2	1.7
Mexico	565	487	23	12	522	261	0.1	-7.6
United States of America	23,512	19,888	768	3,055	23,711	11,455	4.0	0.8
Central America	170	69	10	10	89	43	0.0	-47.6
Costa Rica	134	51	3	5	59	27	0.0	-56.0
Honduras	22	9	3	2	14	10	0.0	-36.4
Jamaica	14	9	4	3	16	6	0.0	14.3
South America	5,343	3,842	80	78	4,000	2,212	0.7	-25.1
Argentina	1,930	865	10	14	889	466	0.1	-53.9
Brazil	1,574	1,216	19	11	1,246	705	0.2	-20.8
Chile	953	1,151	14	2	1,167	637	0.2	22.5
Colombia	377	241	15	13	269	142	0.0	-28.6
Ecuador	80	44	6	12	62	30	0.0	-22.5
Peru	174	118	7	12	137	90	0.0	-21.3
Uruguay	217	175	4	10	189	116	0.0	-12.9
Venezuela	38	32	5	4	41	26	0.0	7.9
Other America	320	41	17	2	60	24	0.0	-81.3
Africa	915	813	141	29	983	482	0.2	7.4
North Africa	182	142	9	7	158	66	0.0	-13.2
Morocco	130	83	5	2	90	41	0.0	-30.8
Sudan	19	13	2	3	18	6	0.0	-5.3
Tunisia	33	46	2	2	50	19	0.0	51.5
Subsaharan Africa	687	659	127	19	805	408	0.1	17.2
Cameroon	21	13	2	3	18	6	0.0	-14.3
Congo	6	23	3	2	28	5	0.0	366.7
Ghana	12	35	6	2	43	5	0.0	258.3
Kenya	30	29	3	1	33	23	0.0	10.0
Liberia	6	29	2	1	32	5	0.0	433.3
Nigeria	46	20	46	3	69	9	0.0	50.0
South Africa	522	475	58	3	536	334	0.1	2.7
Tanzania	22	6	2	1	9	3	0.0	-59.1
Uganda	10	20	3	2	25	12	0.0	150.0
Zimbabwe	12	9	2	1	12	6	0.0	0.0
Other Africa	46	12	5	3	20	8	0.0	-56.5
Middle East	398	364	41	19	424	55	0.1	6.5
Egypt	70	56	4	1	61	10	0.0	-12.9
Iraq	24	19	3	2	24	3	0.0	0.0
Jordan	34	58	4	3	65	13	0.0	91.2
Kuwait	44	31	6	3	40	4	0.0	-9.1
Oman	16	16	2	1	19	2	0.0	18.8
Palestine	9	4	3	1	8	1	0.0	-11.1
Qatar	8	4	2	1	7	1	0.0	-12.5
Saudi Arabia	29	31	3	2	36	6	0.0	24.1
Syria	33	34	2	1	37	2	0.0	12.1
United Arab Emirates	24	19	5	1	25	4	0.0	4.2
Yemen	55	83	4	1	88	4	0.0	60.0
Other Middle East	52	9	3	2	14	5	0.0	-73.1